

Model 312-DC/SR with Rip Navigator Tracker...

...Destination Profit



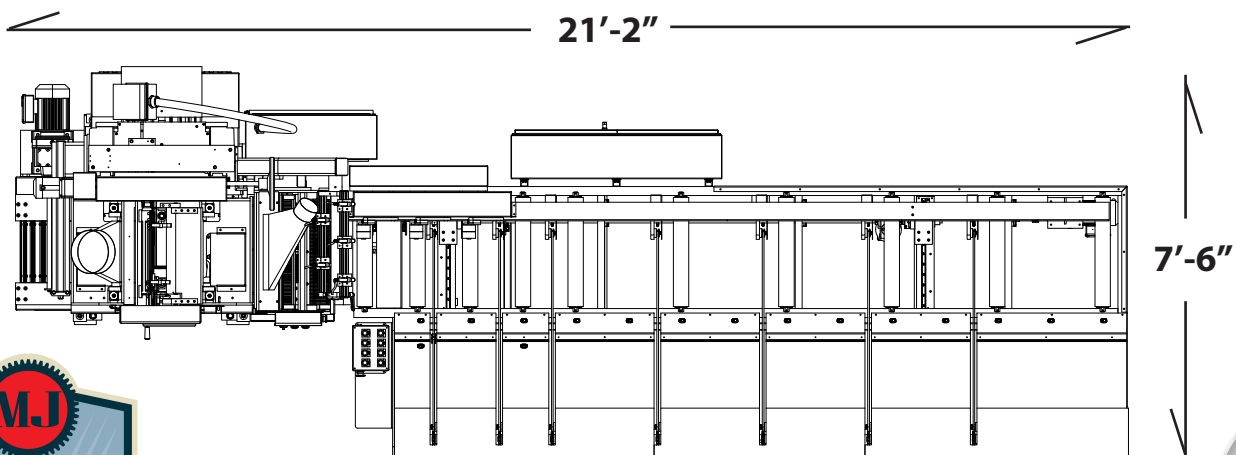
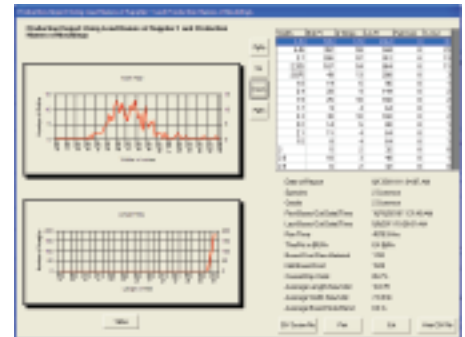
Feature packed - Select-Rip flexibility in a compact, affordable package

Up to Six - 16' boards per minute production capacity

One or two shifting blades with fixed or TwistLock fixed blades

Fewer rejects Better yield from your raw materials

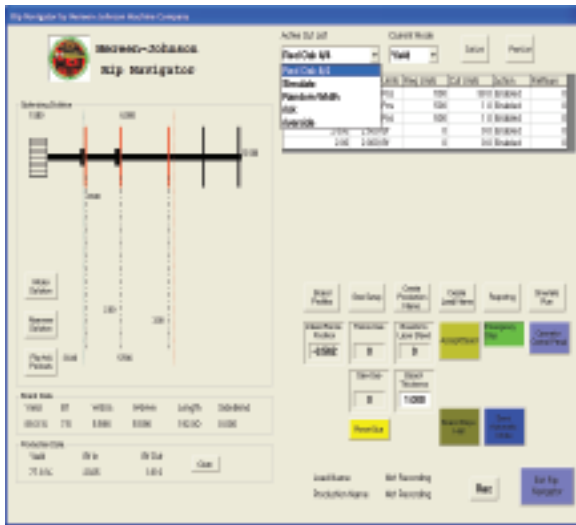
Track operator / shift / vendor / performance Less rework



(12' system shown / also available in 16' capacity)



Manage the many factors that influence your bottom line



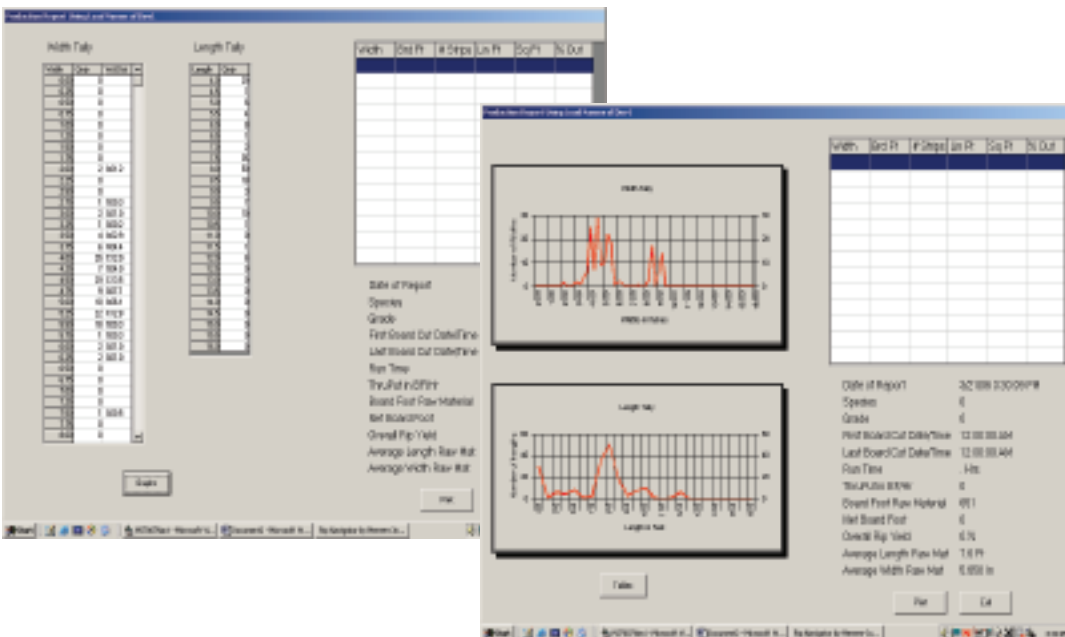
Imagine having the RIGHT parts WHEN you need them!
Getting good yield won't mean much unless you're producing

the parts you need from your raw materials. Rip Navigator provides production flexibility with three modes of operation: Yield mode to maximize fiber recovery, value mode that allows you to quantify a dollar value for needed components, and manual mode for times when inventory is more important than yield recovery.



Increased Yield
Enhanced Safety
Higher Efficiencies

Greater Production Flexibility
Less Rework **Fewer Rejects**
Better Feeding Accuracy



Optimize your business! Rip Navigator is a powerful tool to track production performance. You control how reports are compiled choosing variables that are important to your business performance. Track performance by any combination of operator, vendor, species, shift, material thickness, grade, or individual load.

