



MEREEN-JOHNSON

Leading Technology - Lasting Performance

Rip Navigator **Scout** Rip Optimizing System



Big shop flexibility and performance in
a compact, affordably priced package

(Productivity+Optimum utilization of raw materials+Proper inventory)-(Waste+Rework+Down time)= *Profit*

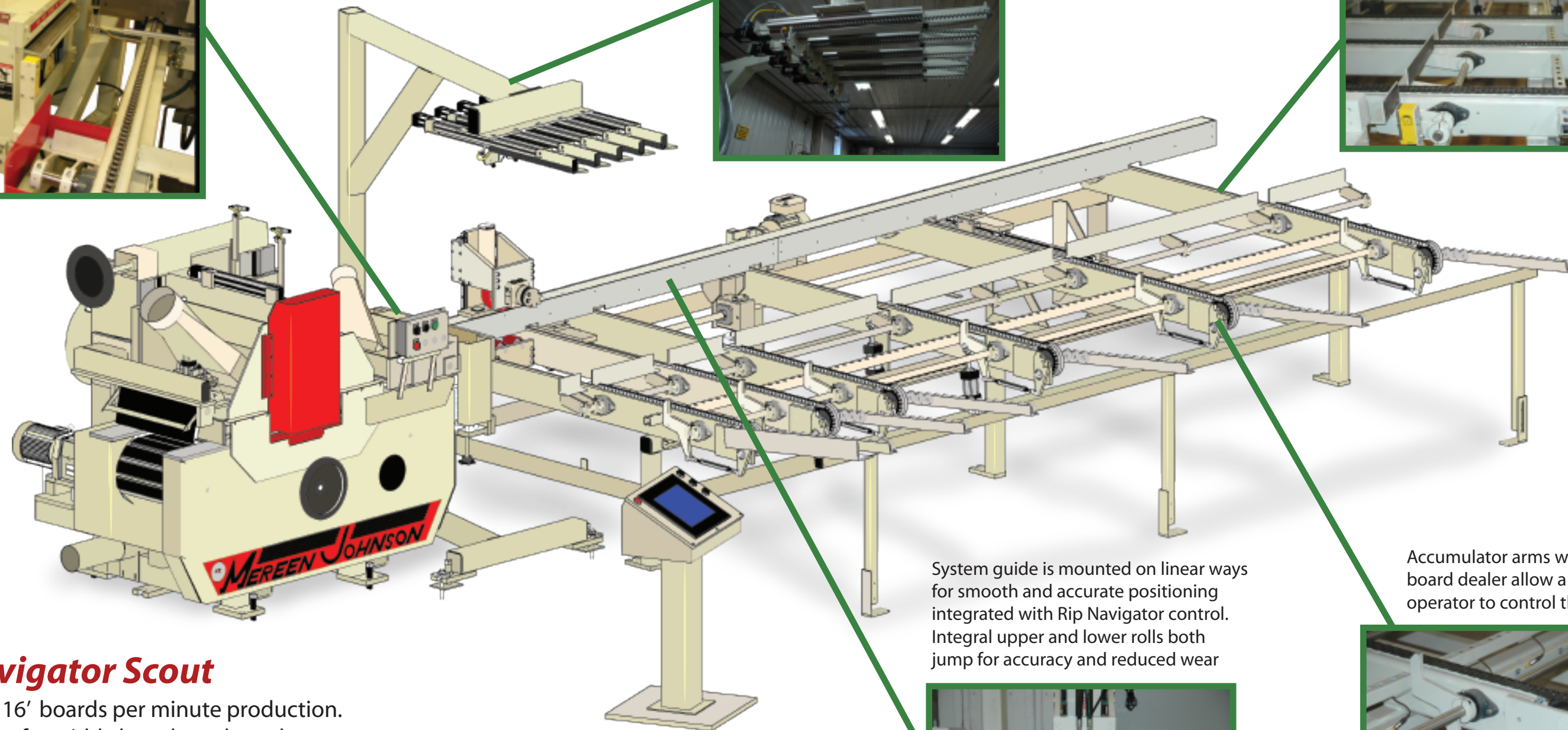
Mereen-Johnson Power Tables feature dual rolls with pressure compensated drive and timing features for accurate feeding and minimal saw feed bed wear



Operator intervention station with servo controlled lasers integrated to Rip Navigator controls allow operator to see the computer generated solution and edit, if required



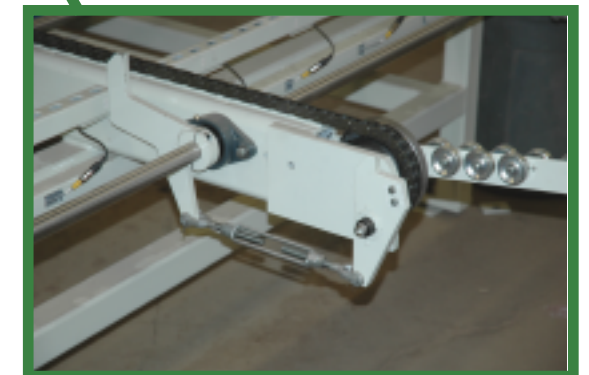
Robust steel tube and plate construction maximizes performance, increases longevity and reduces maintenance requirements



System guide is mounted on linear ways for smooth and accurate positioning integrated with Rip Navigator control. Integral upper and lower rolls both jump for accuracy and reduced wear



Accumulator arms with integrated board dealer allow a single operator to control the system

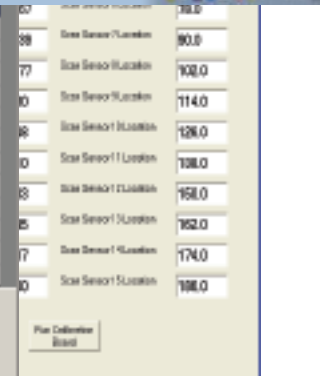
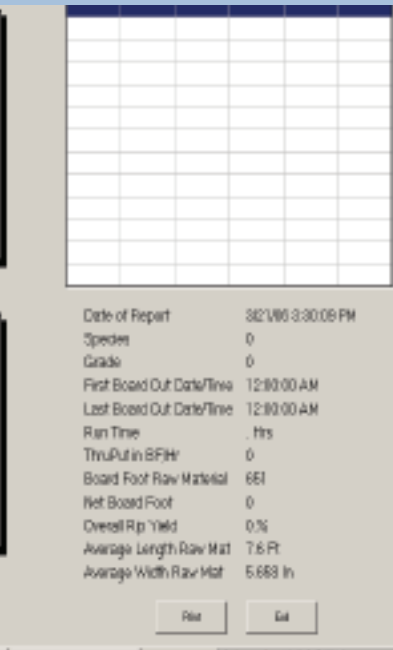
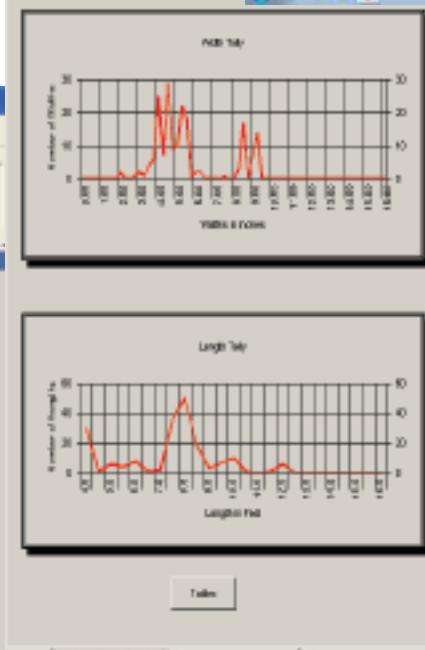
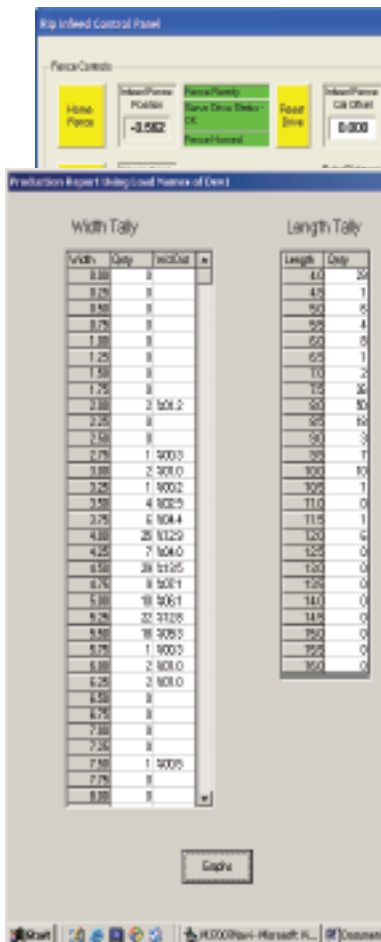
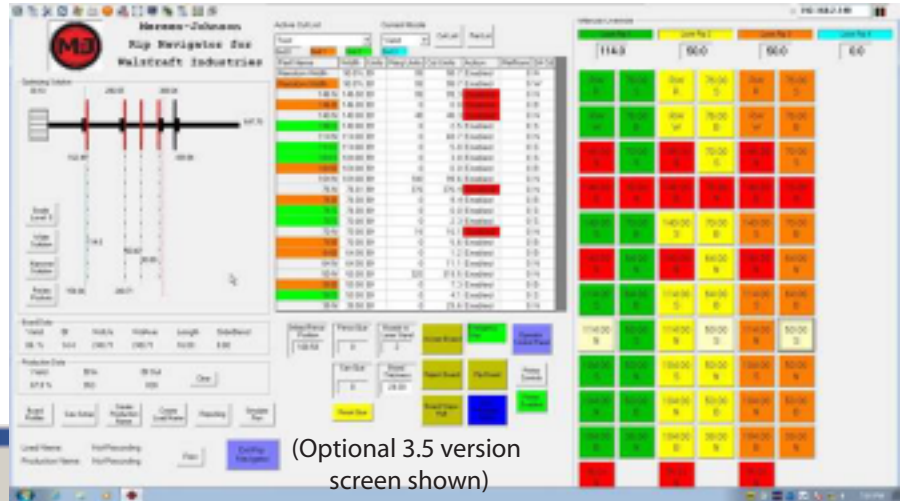


Rip Navigator Scout

- Up to ten - 16' boards per minute production.
- Scan lumber for width, length, and crook.
- Ships fully assembled for fast and easy set-up.
- Random width part capability on Select Rip Saws.
- Integrates with most Mereen-Johnson fixed blade and selective rip saws.
- Real time recording can turn off rips when production requirements are met.
- Programmable cut bill will only rip strips that meet your length and cross cut requirements.

Manage the many factors that influence your bottom line

Imagine having the **RIGHT** parts **WHEN** you need them!
Getting good yield won't mean much unless you're producing the parts you need from your raw materials. Rip Navigator provides production flexibility with three modes of operation: Yield mode to maximize fiber recovery, value mode that allows you to quantify a dollar value for needed components, and manual mode for times when inventory is more important than yield recovery.



Optimize your business! Rip Navigator is a powerful tool to track production performance. You control how

reports are compiled choosing variables that are important to your business performance. Track performance by any combination of operator, vendor, species, shift, material thickness, grade, or individual load. Get the system that will streamline your production, enhance operator safety, reduce waste, improve feeding accuracy, minimize rework, and increase your profits!